



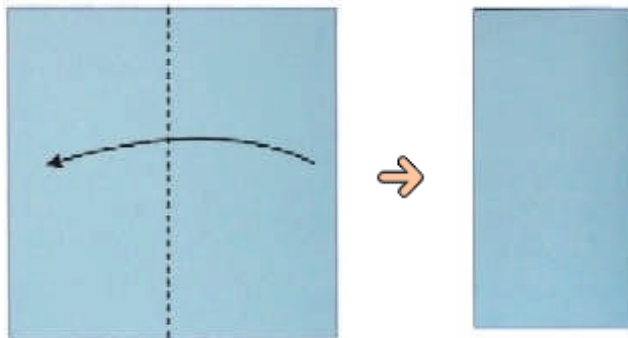
Klavier - Piano



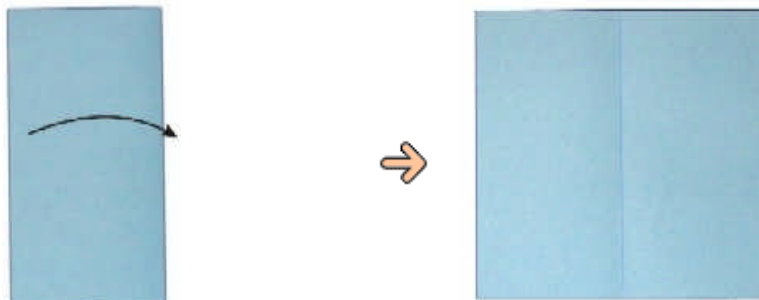
Material: Origami Papier 15 x 15 cm / Rückseite liegt oben



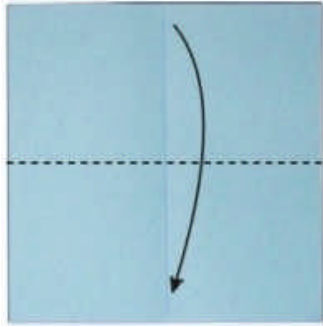
1.



2. wieder entfalten

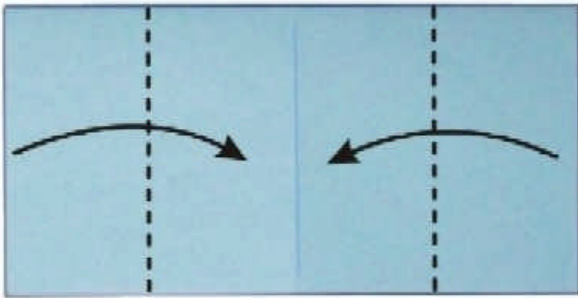


3.

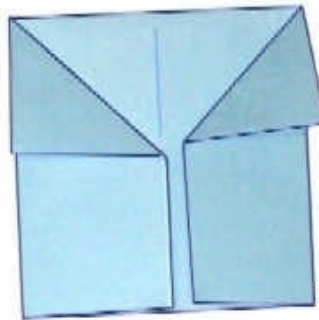
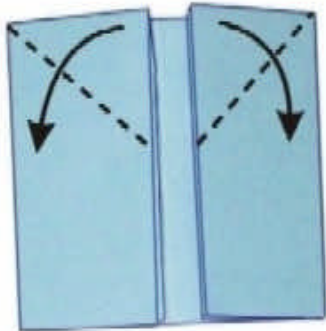


4.

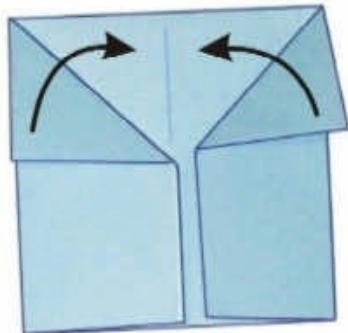
Vergrößerte Ansicht



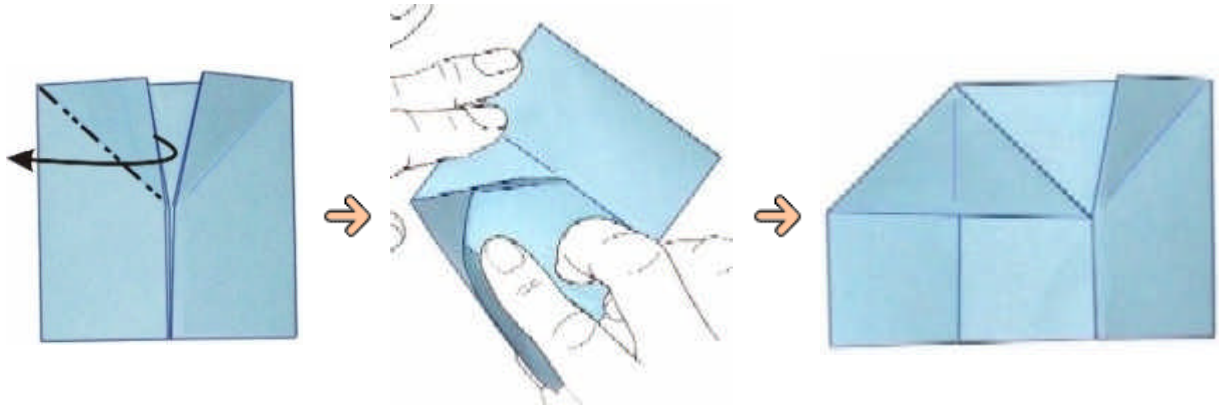
5.



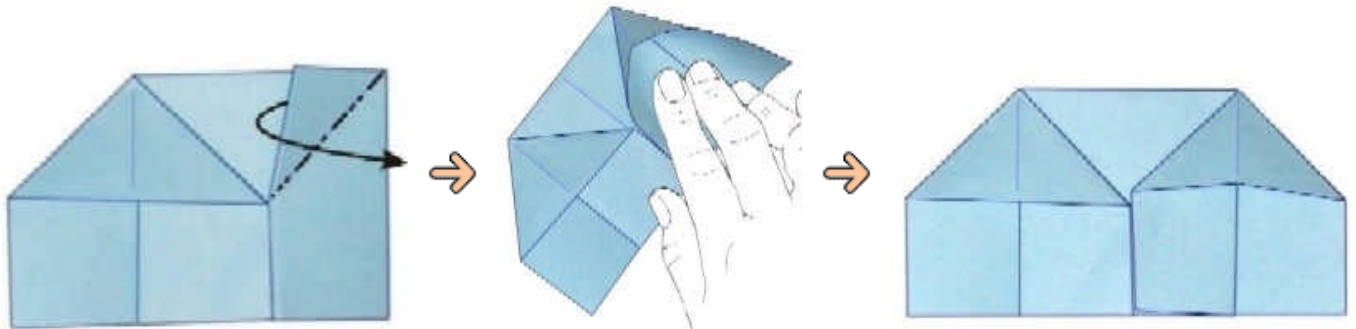
6. wieder entfalten



7.

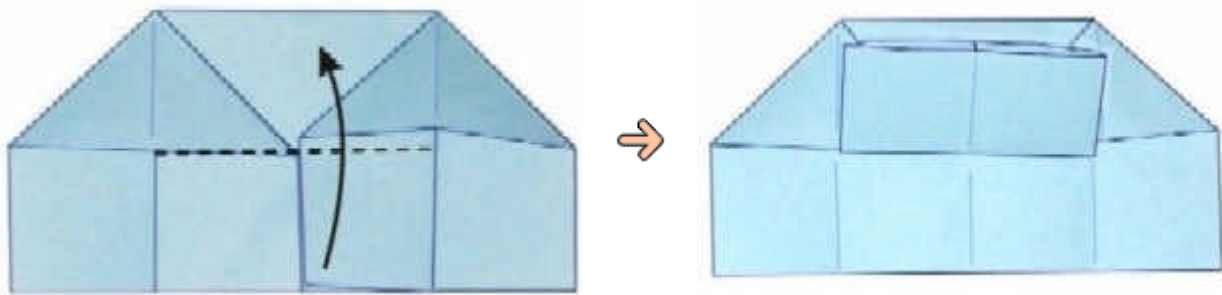


8.

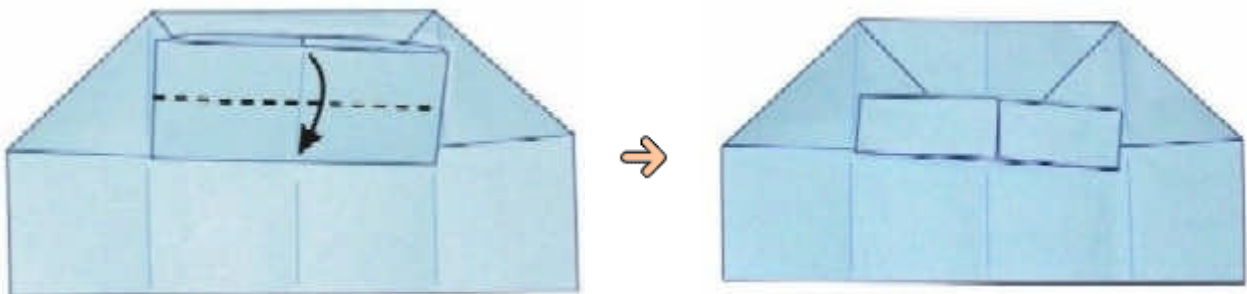


9.

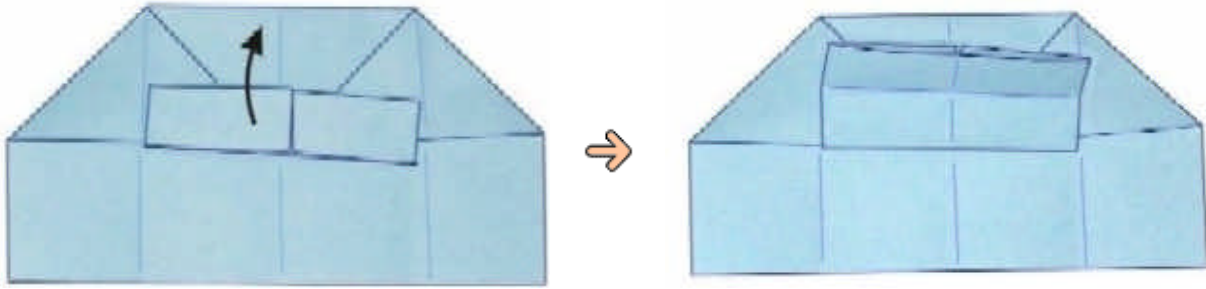
Vergrößerte Ansicht



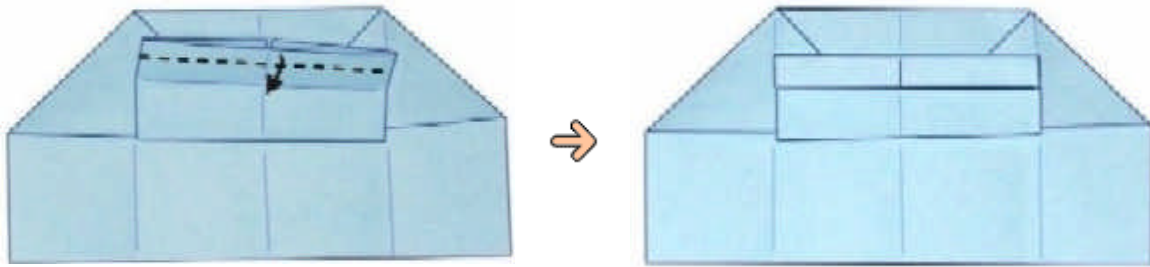
10.



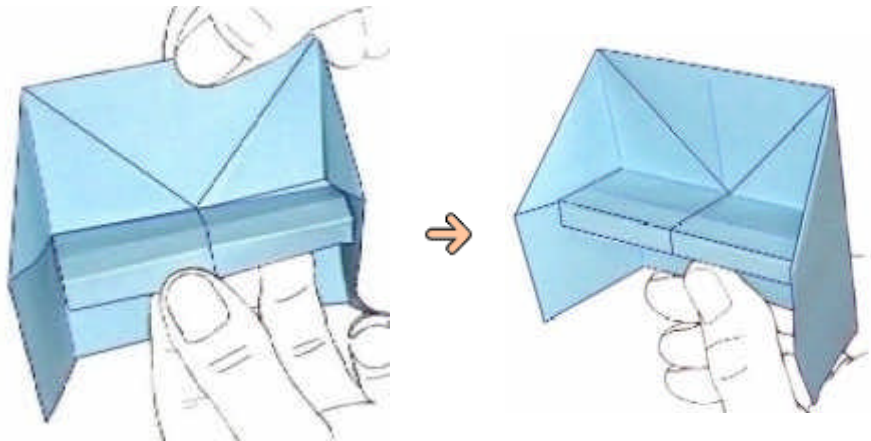
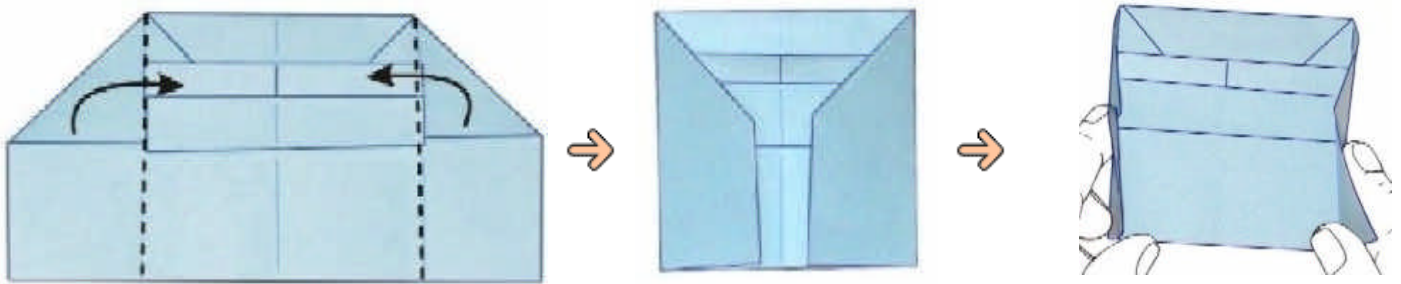
11.wieder entfalten



12.



13.



"Traditional Origami" diagrammed by Miyuki Lacza
Miyuki Lacza (C) Japan Art Design - 2004, Schutzgebühr 6,90 Euro



www.japan-art-design.de

Zeichnungen: Miyuki Lacza

